

# BAN&OR SYMPHONY ORCHESTRA

est. 1896

## *Audition requirements – Bass*

*Revised February 2025*

1. Solo - Candidate's choice, not to exceed 5 minutes
2. The following excerpts:
  - Beethoven Symphony No. 5; 3<sup>rd</sup> movement; Scherzo and Trio –  
Excerpt #1: Beginning to 5<sup>th</sup> measure of A (m.100)  
Excerpt #2: Trio: (beginning with pickup to m.141) to letter B (m.196) no repeat
  - Beethoven Symphony No. 9; Finale; all recitative excerpts (m.8-91)  
Exclude m.30-37, m.48-55, m.63-64
  - Brahms Symphony No. 1; 1<sup>st</sup> movement: letter E to letter F (2<sup>nd</sup> ending)
  - Mahler Symphony No. 1; 3<sup>rd</sup> movement: opening bass solo
  - Mozart Symphony No. 35; 4<sup>th</sup> movement; Finale: beginning to letter A
  - Mozart Symphony No. 40; 1<sup>st</sup> movement:  
Excerpt #1: 20 measures before letter C to 5 measures after letter C  
Excerpt #2: measures 191-220
  - Saint-Saens Carnival of the Animals: Elephant
  - Strauss Ein Heldenleben; No. 9 to 6 measures after No. 12; No. 51 to No. 65;
  - Possible sight reading

# Beethoven — Symphony No. 5

## Violoncello e Basso

6

199 *Viol. I* *Più moto*  $\text{♩} = 116$

208 *Vello*  
*Cb.*

215 *Tempo I*

227

230

*Allegro*  $\text{♩} = 96$   
*unis.*

14 *Corni*

27

42 *poco rit.* *a tempo*

55

# Beethoven — Symphony No. 5

## Violoncello e Basso

7

68 *f*

82 *sf sf sf sf sf*

96 **A** *dimin. pp* *f > p* *pizz.* *pizz.*

Vello }  
Cb. }

109 *f > p* *sempre p*

122 *cresc.* *unis.* *arco* *ff* Vello  
Cb.

137 *unis.* *p* *f*

147

158 1. 2. *f*

166

175 1 2 3 4 5 6

188 Vello **B** *f*  
Cb. *f*

198 *unis.* *dimin.* *p*

207 *sempre più p* 8

Beethoven — Symphony No. 9  
Violoncello e Contrabbasso

149 *cresc.* *f* *p* *pizz.* **C**

153 *pp* *cresc.* *f* *fp* *p* *f* *pizz.* *arco*

**Presto** *d = 98*  
Legni *f*

11 *dim.* *p* *Fag.*

22 *f* *Fag.*

**Allegro ma non troppo** *d = 88*  
div. *pp* *pp*

**Tempo I** *unis.* *f* *ff* *dim.* *ritard.*

**poco Adagio** *Vello* *Vivace* *pizz.*

**Tempo I** *Vello* *arco* *f* *dim.* **Adagio cantabile** *Fag. I*

**Tempo I Allegro** *p* *cresc.* *ff*

75 *Fag. I* **Allegro assai** *d = 80* **Tempo I Allegro** *f* *f*

84 *Fag.*

# Brahms — Symphony No. 1 in C Minor

2

BASS

Hr. III

arco

17

Klar. I

125 *p cresc.* *f* *p*

151 *ppp* *pizz.* *p* *cresc.* *ff* **E** arco

162 *sf* *sf* *ff*

171 *ff*

180 *ff*

188 1. 1. 2. *ff* *sf*

197 **F** *pp sempre* *pp*

209 *dim.*

219 1. *pizz.* *p* *cresc.*

229 **G** arco *f* *ff*

239 1. *f* *ff*

250 1.

260 1. *ff* *ff*

Detailed description: This page of the musical score for the Bass part of Brahms' Symphony No. 1 in C Minor contains measures 125 through 260. The music is written in bass clef with a key signature of two flats (B-flat and E-flat). The score includes various dynamic markings such as *p cresc.*, *f*, *p*, *ppp*, *pizz.*, *p*, *cresc.*, *ff*, *sf*, *pp*, *dim.*, and *ff*. Performance instructions include *arco*, *pizz.*, and *pp sempre*. There are also performance markings for woodwinds: '17' for Clarinet I and 'Hr. III' for Horn III. The score features several first endings, indicated by '1.' and '2.' above the notes. Boxed letters 'E', 'F', and 'G' are placed above the staff to indicate specific harmonic or structural points. The music is characterized by its rhythmic complexity and dynamic range, typical of Brahms's style.

Mahler — Symphony No. 1 in D Major

6

Contrabass.

III. Satz.

Feierlich und gemessen, ohne zu schleppen.

1 (Pauken) *pp*

*p* mit Dämpfer

2

3 Nur eine Hälfte. *pizz.* 1 2 3 4

Alle Dämpfer ab *pp*

5 6 7 8 4 *pp* *pizz.* 1 2 3 4

Wie geth. *pp*

5 6 7 8 9 Zurückhaltend. 1

5 a tempo (Ziemlich langsam.) *unis.* *p* *pizz.* 2

6 Nicht schleppen.

7 *poco rit. a tempo*

Nicht schleppen. *poco riten. a tempo. sempre pizz.* 1 2 2 *pp*

2 3 4 5 1 9 1 1 2 3

Sehr einfach und schlicht, wie eine Volkswaise. 12 *pp*

4 7 10 2 *pizz.* 9 11 6 (1. Viol.) *pp*

(Harfe) *pp*

*pizz.* *poco riten.* *ppp*

13 Wieder etwas bewegter. *pizz.* 1 2 3 4 5 6 7 *sempre ppp*

Violoncello und Kontrabaß

**MENUETTO**

9

**TRIO**

21

31

42

**FINALE**

**Presto**

1

Men. d. c.

9

14

21

27

38

**A**

VOLONCELLO e BASSO

106 *p*

114 *f*

120

126

131 [C]

136 Viol. I 6 Vcll.

148 Bassi *f*

154

160 [D] Viol. I *p*

178 *f*

183 1 *p* *f*

192

197

Detailed description: This page of a musical score for Violoncello and Bass covers measures 106 to 197. The score is written in bass clef with a key signature of one flat (B-flat major or D minor). It features several dynamic markings: *p* (piano) at measures 106 and 160, and *f* (forte) at measures 114, 148, 178, and 183. There are two large bracketed sections: one from measure 114 to 136, and another from measure 183 to 192. Measure 136 includes staves for Viol. I (Violin I) and Vcll. (Violoncello). Measure 148 includes a staff for Bassi (Basses). Measure 160 includes a staff for Viol. I. Measure 183 includes a first ending bracket labeled '1'. Measure 131 has a circled 'C' above it, and measure 160 has a circled 'D' above it. The score concludes with measure 197.



Saint-Saens — Carnival of the Animals

CONTREBASSE

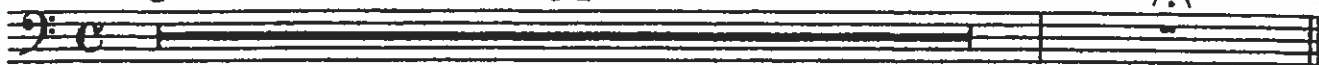
2

N° 2

Poules et Coqs

Allegro moderato

34



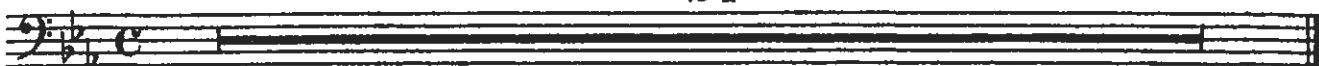
N° 3

Hémiones

(Animaux véloces)

Presto furioso

24



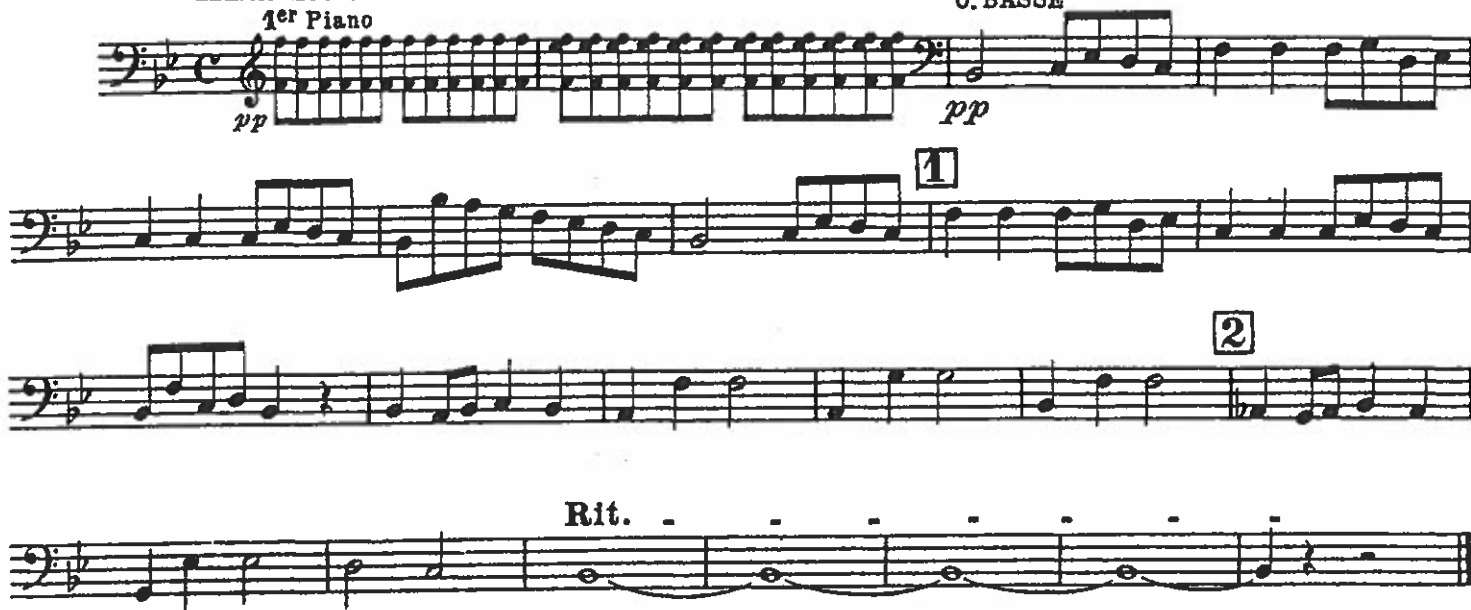
N° 4

Tortues

Andante maestoso

1<sup>er</sup> Piano

C. BASSE



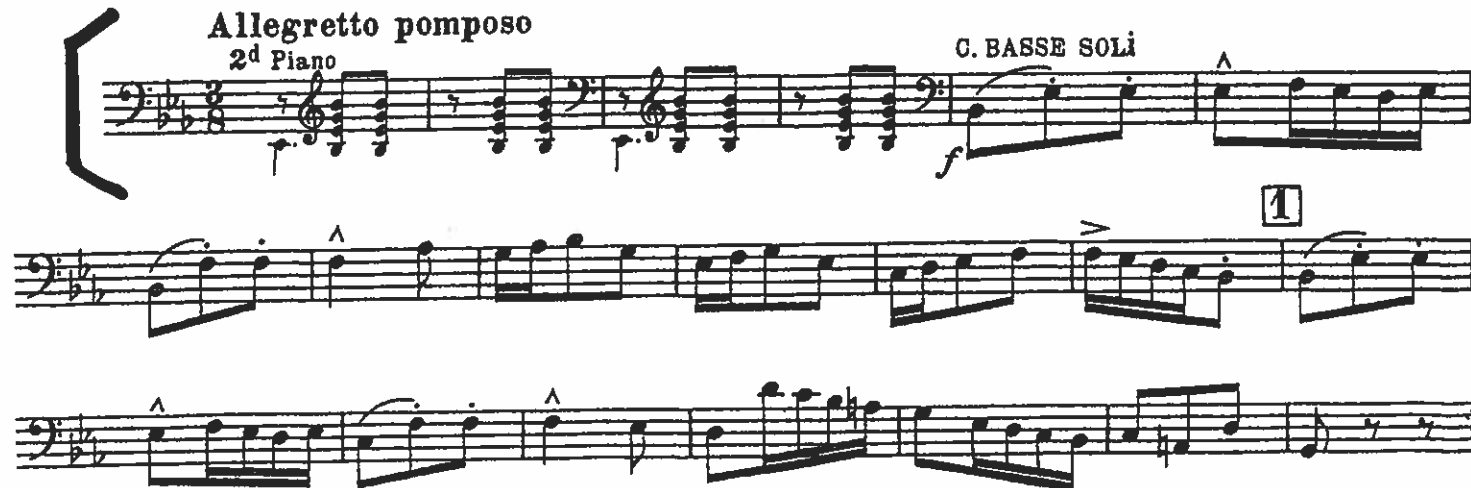
N° 5

L'Éléphant

Allegretto pomposo

2<sup>d</sup> Piano

C. BASSE SOLI



Saint-Saens — Carnival of the Animals

CONTREBASSE

Musical score for Contrabass, measures 1-5. The score is in bass clef with a key signature of two flats (B-flat and E-flat). Measure 1 starts with a dynamic marking of *mf*. Measure 2 has a boxed fingering '2'. Measure 3 has a boxed fingering '3' and a dynamic marking of *f*. Measure 4 has a boxed fingering '4' and a dynamic marking of *ff*. Measure 5 ends with a large closing bracket on the right side.

N° 6

Kangourous

Moderato

Musical score for Kangourous, measures 1-5. The score is in bass clef with a key signature of two flats. Measure 1 has a triplet of eighth notes with a '3' below it. Measure 2 has a boxed fingering '1' above a triplet of eighth notes with a '3' below it. Measure 3 has a triplet of eighth notes with a '3' below it. Measure 4 has a triplet of eighth notes with a boxed fingering '2' above it and a '3' below it. Measure 5 has a quarter note with a '5' above it and a triplet of eighth notes with a '3' below it.

N° 7

Aquarium

Andantino

39

Musical score for Aquarium, measure 1. The score is in bass clef with a key signature of two flats and a common time signature (C). The measure contains a single whole note.

N° 8

Personnages à longues oreilles

Tempo ad lib

24

Musical score for Personnages à longues oreilles, measures 1-3. The score is in bass clef with a key signature of two flats and a 3/4 time signature. Measure 1 contains a whole note. Measure 2 contains a whole note with a fermata. Measure 3 contains a whole note with a fermata.

N° 9

Le Coucou au fond des bois

Andante

42

Musical score for Le Coucou au fond des bois, measures 1-3. The score is in bass clef with a key signature of three sharps (F#, C#, G#) and a 3/4 time signature. Measure 1 contains a whole note. Measure 2 contains a whole note with a fermata. Measure 3 contains a whole note with a fermata.

Contrabässe.

2

9 *ff*

10 *fff*

11 *ff*

geteilt *fresc.* *ff*

12 *ff*

*ff*

13 *ff*

*ff*

Etwas langsamer. *ff*

6 14 5 15 7

Oboe I

*allmählig etwas fließender. mit Dämpfen.*

*p molto espr.* *f dim. mf* *sf dim.*

16 *p* *mf molto espr.*

17 *dim.* *p cresc.* 18

Contrabässe.

51 *ff*

52

53 *p*

54 *cresc.* *f*

55 *cresc. ff* *fp* *ff*

56 1

57 *f* 2

58 1 2

59 *ff* 2 60 2

61 *ff* *ffp* 2 62 *f* *cresc.* *ff*

63 *ff* *p.*

64 *cresc.* *ff* *mf*

Detailed description: This page contains the musical score for the Contrabasses in Strauss's 'Ein Heldenleben'. It consists of ten staves of music, numbered 51 through 64. The key signature is B-flat major (two flats). The score includes various dynamic markings such as *ff* (fortissimo), *p* (piano), *f* (forte), *fp* (fortissimo piano), *ffp* (fortissimo piano), *mf* (mezzo-forte), and *cresc.* (crescendo). There are also articulation marks like accents and slurs. Some measures contain fingerings (1, 2, 3) and breath marks (>). The music features a mix of eighth and sixteenth notes, often beamed together, and some rests.

Contrabässe.

65 *ff*

66 *ff* mit grossem Schwung.

67 *ff*

68 *fff*

69 *f*

70 *f*

71 *ff*

72 *ff*

73 *f*

74 *sfz* *ff* *dim.* *p* *ff*

75 *ff*

76 *ff*

*hervortretend. mit Steigerung.*

*dim. - - - p cresc. - - - ff*

*1 2 1 3 1 2 2 2 1 2 2 2 1 3 5*